

Coaxial InGaAs PIN Diode

Features	
High Responsivity, Low Return Loss Low Dark Current , Low Capacitance Coaxial Package, Laser Welding	
Application	
Analog Optical Receiver Testing Equipment	

Specification

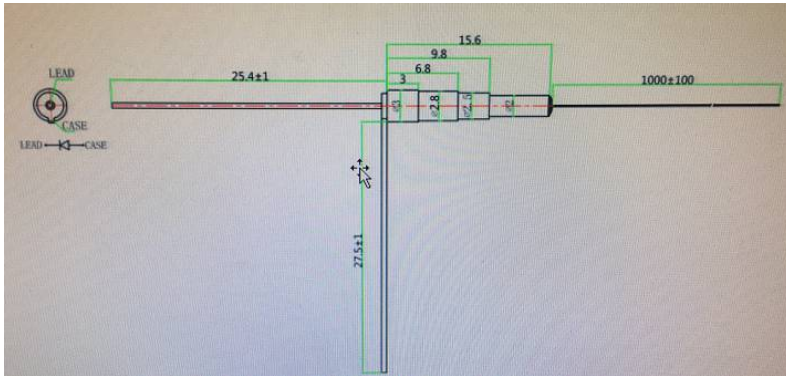
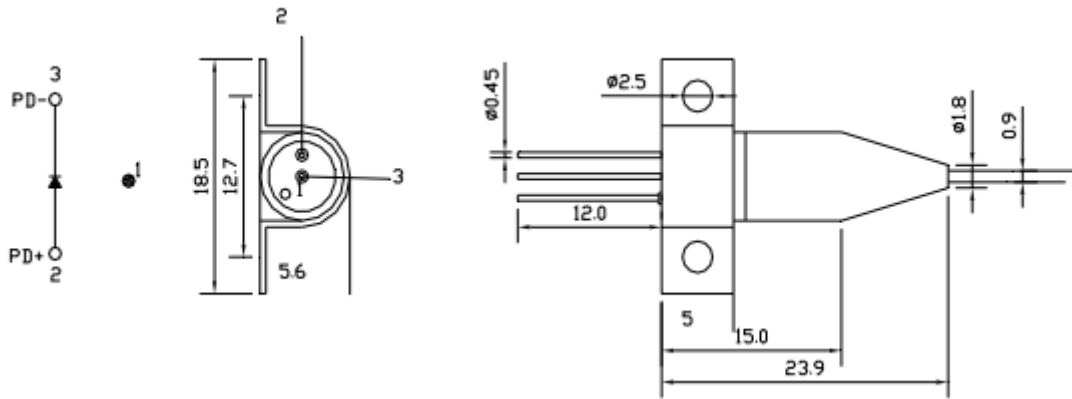
Absolute Maximum Ratings

Parameter	Symbol	Ratings	Unit
Saturation power	Ps	5	mW
Forward current	If	10	mA
Reverse voltage	Vr	30	V
Reverse current	Ir	5	mA
Operating temperature	Top	-40 ~ +85	°C
Storage temperature	Tstg	-40 ~ +85	°C

Optical and Electrical Characteristics (Tc=25°C)

Parameter	Symbol	Min	Type	Max	Unit	Test condition
Operating Wavelength	λ	1100		1650	nm	
Responsivity	R	0.85	0.90		A/W	Vr=-5V, λ =1310nm
		0.90	0.95			Vr=-5V, λ =1550nm
Dark Current	Id		0.2	0.5	nA	Vr=5v
Capacitance	C		0.6	0.75	pF	Vr=5V, f=1MHz, case open
Rise time/Fall time	Tr/Tf			0.3	ns	Vr=5V, 10~90%
Bandwidth	Bw	2.5			GHz	Vr=5V, Vr=5V, 50 Ω bad with lead length=6mm, case open
Composite Second Order Beat	CSO	-	-70	-	dB	Note 1
Composite Third Order Beat	CTB	-	-80	-	dB	Note 1
Operating Voltage	V	-	-5	-	V	
Optical Return Loss	RL	-	-45	-	dB	λ = 1310nm

Package Dimensions



Ordering Information

PD	Area	Receive Wavelength	Pigtail	Fiber	length	Connector	Package
	55=55 60=60 75=75 80=80 1H=100 1T=1000	1550=1550nm 1650=1100-165 0	0=250um bare fiber 1=0.9mm loose tube	1=SM F-28e	0.8=0.8m S=Specify	NE=None FA=FC/APC FC=FC/UPC SA=SC/APC SC=SC/UPC LC=LC/UPC X=Specify	56=5.6x24 30=3.0x15.6